

# Compliance 2.0: Emerging Best Practice Model

Global Risk Practice October 2015

**Authored by:**  
Piotr Kaminski  
Kate Robu



# Introduction

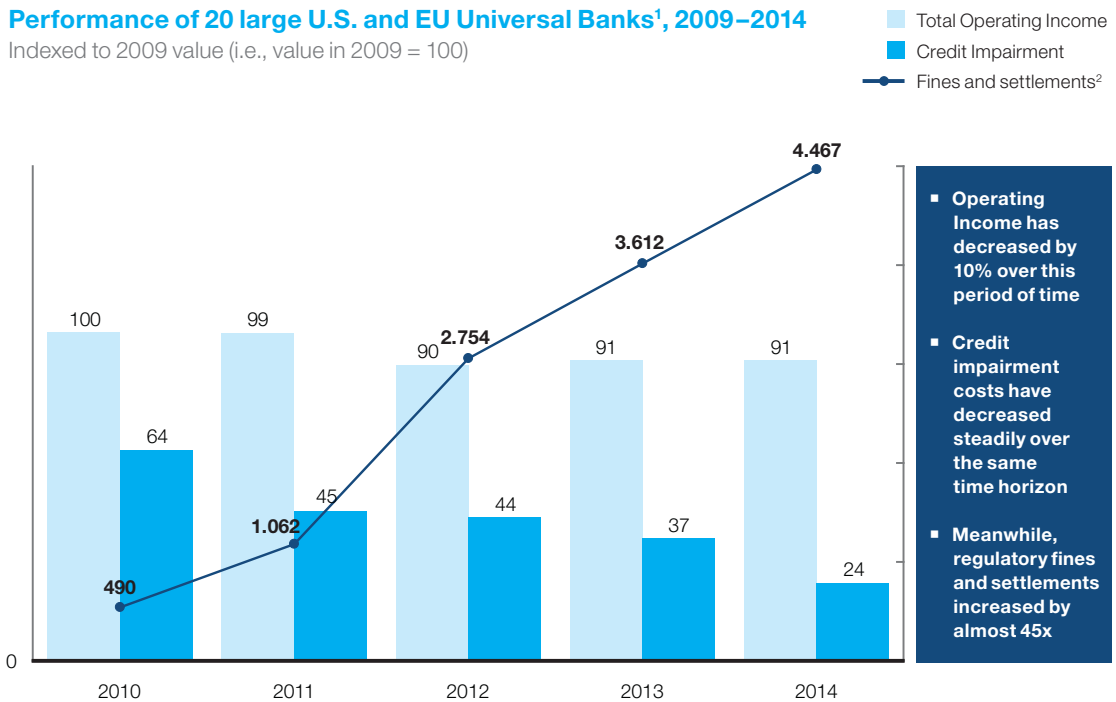
Compliance risk has become one of the most significant ongoing concerns for financial institution executives. Since 2009, regulatory fees have dramatically increased relative to banks' earnings and credit losses (Exhibit 1). Additionally, the scope of regulatory focus continues to expand. Mortgage servicing was a learning opportunity for the US regulators that, following the crisis, resulted in increasingly tight scrutiny across many other areas (e.g., mortgage fulfillment, deposits, cards, etc.). New topics continue to emerge, such as conduct risk, next-generation Bank Secrecy Act and Anti Money Laundering (BSA/AML) risk, risk culture, and third- and fourth-party (i.e., sub-contractors) risk amongst others. Even though a lot of work has been done to respond to immediate pressures, the industry needs a more structural answer that will allow banks to effectively and efficiently mature their risk and control frameworks to make them more robust and sustainable over time.

## EXHIBIT 1

### Since 2009, regulatory fees have increased dramatically relative to banks' earnings and credit losses

#### Performance of 20 large U.S. and EU Universal Banks<sup>1</sup>, 2009–2014

Indexed to 2009 value (i.e., value in 2009 = 100)



<sup>1</sup> Calculated using company annual reports and press clippings from 2009 to 2014. Coverage includes the top 20 European and US G-SIBs (Universal Banks only) by assets.

<sup>2</sup> Amounts include paid fines and settlements only; does not include provisions, such as Payment Protection Insurance in the case of UK banks

SOURCE: SNL; McKinsey analysis

The traditional compliance model was designed in a different era and with a different purpose in mind, largely as an enforcement arm for the legal function. Compliance organizations used to promulgate regulations and internal bank policy largely in an advisory capacity with a limited focus on actual risk identification and management. However, this model has offered a limited understanding of the business operations and underlying risk exposures, as well as of how to practically translate regulatory requirements into management actions. Even if a compliance testing program was established, it frequently borrowed heavily from the late 20th-century operational risk playbook by emphasizing a bottom-up, subjective process of control testing vs. a more objective, risk-based monitoring of material residual risks. Frequently, business managers are left to their own devices to figure out what specific controls are required to address regulatory requirements, typically leading to a build-up of labor-intensive control activities with uncertain effectiveness. Many banks still struggle with the fundamental issues of the control environment in the first line of defense such as compliance literacy, accountability, performance incentives, and risk culture. Finally, compliance activities tend to be isolated, lacking a clear link to the broader Risk Management framework, governance, and processes (e.g., Operational Risk Management, risk appetite statement, risk reporting and analytics, etc.). More often than not, the net result is primarily a dramatic increase in compliance and control spend with either limited or unproved impact on the residual risk profile of a bank.

An emerging best practice model for compliance in banking needs to rely on three core principles to address these challenges.

## 1. An expanded role of compliance and active ownership of the risk and control framework

In most cases banks need to transform the role of their Compliance departments from that of an advisor to one that puts more emphasis on active risk management and monitoring. In practice it means expanding beyond offering advice on statutory rules, regulations, and laws and becoming an active co-owner of risks to provide an independent oversight of the control framework.

Given this evolution, responsibilities of the compliance function are expanding rapidly to include:

- Generating practical perspectives on the applicability of laws, rules, and regulations across businesses and processes and how they translate into operational requirements (Exhibit 2)
- Creating standards for risk materiality (e.g., definition of material risk, tolerance levels, tie to risk appetite, etc.)
- Developing and managing a robust risk identification and assessment process/toolkit (e.g., comprehensive inventory of risks, objective risk assessment scorecards, risk measurement methodology etc.)
- Developing and enforcing standards for an effective risk remediation process (e.g., root cause analysis, performance tracking, etc.) to ensure it addresses root causes of compliance issues rather than just “treating the symptoms”
- Establishing standards for training programs and incentives tailored to the realities of each type of job or work environment

- Ensuring that the frontline effectively applies processes and tools that have been developed by compliance
- Approving clients, transactions, and products based on predefined risk-based rules
- Performing a regular assessment of the state of the overall compliance program
- Understanding the bank’s risk culture and its strengths as well as potential shortcomings

## EXHIBIT 2

### Compliance is now expected to provide practical perspectives on how regulations translate into specific operational requirements

#### Example: Numerous TILA subparts can be distilled into seven major operational requirements

ILLUSTRATIVE

##### Contents of Truth In Lending Act (Reg Z):

- Subpart A: General information – Purpose, coverage, exemptions etc.
- Subpart B: Requirements for open-end credit lines, including credit card accounts and HELOCs.
- Subpart C: Requirements for closed-end credit, including home-purchase loans and motor vehicle loans with a fixed loan term.
- Subpart D: Contains rules on oral disclosures, Spanish language disclosure in Puerto Rico, record retention, effect on state laws, state exemptions (which only apply to states that had Truth in Lending-type laws prior to the Federal Act), and rate limitations.
- Subpart E: Contains special rules for mortgage transactions:
  - § 1026.32 Requirements for certain closed-end home mortgages
  - § 1026.33 Requirements for reverse mortgages, including the total annual loan cost rate and transaction disclosures
  - ...

##### Operational requirements:

1. Provide accurate and timely disclosures to customers
2. Provide accurate and timely re-disclosures to customers
3. Ensure that APR and fees are within tolerance
4. Ensure advertising and solicitation practices and materials are within policy
5. Ensure that customers are aware and able to exercise the right to rescind
6. Ensure that document records are retained per guidelines
7. Ensure originator incentives meet requirements

SOURCE: McKinsey

Risk culture has a special place in the compliance playbook. Indeed, most serious failures across financial institutions in recent times have a cultural root cause leading to heightened regulatory expectations. Elements of “strong” risk culture are relatively clear (albeit not always explicitly articulated) and include timely information sharing, rapid elevation of emerging risks, and willingness to challenge practices; however, they are difficult to measure objectively. Use of tools such as structured risk culture surveys can allow for a deeper understanding of nuances of risk culture across the organization and their results can be benchmarked against peer institutions to reveal critical gaps. Consequently risk culture can be actively shaped, monitored, and sustained by committed leaders and organizations.

Effective execution of these expanded responsibilities requires a much deeper understanding of the business processes by Compliance. There are a few practical ways to achieve this, including:

- Incorporating process walkthroughs into the regular enterprise compliance risk assessments (e.g., facilitated workshops with first line and second line to assess inherent risk exposures and how they affect business processes)
- Implementing a formal business change management process that flags any significant operational changes (e.g., volumes, products, workflows, footprint, and systems) to the second line
- Developing a robust toolkit for objectively measuring risk (e.g., quantitative measurement for measurable risks, risk markers for risks harder to quantify, common inventory of risky outcomes, scenario analysis and forward-looking assessments, etc.)

Finally, the design of the Compliance function's operating model is becoming increasingly important. Thus, it demands a shift from a siloed, Business Unit-based coverage to a model where Business Unit-coverage is combined with horizontal expertise around key compliance areas, such as BSA/AML, UDAAP, mortgage (across all mortgage businesses), third-party and others.

## 2. Transparency into residual risk exposure and control effectiveness

One of the traditional industry practices for the second line's engagement with the business has been to identify "high-risk processes" and then to identify "all the risks" and "all the controls" that pertain to each of them. This approach, however, falls short of creating a real and comprehensive transparency into material risk exposures and often becomes a merely mechanical exercise.

First, the lack of an objective and clear definition of a "high-risk process" frequently leaves this decision to the discretion of business lines, which can lead to the omission of risks that are critical from a compliance risk standpoint but deemed less significant from a business standpoint (e.g., a low-volume collections process can seem an insignificant part of the overall business portfolio but can be a critical area for regulatory compliance). This approach also suffers from inconsistencies. As an example, an account opening process may be deemed high-risk in some retail units but not in others.

Second, the pursuit of documenting virtually "all risks" and "all controls" implies a significant amount of work and actually limits first line's ability to go deep on issues that truly matter, producing lengthy qualitative inventories of risks and controls instead of identifying material risk exposures and analyzing the corresponding process and control breakpoints and root causes.

The new approach focused on residual risk exposures and critical process breakpoints ensures that no material risk is left unattended and provides the basis for truly risk-based, efficient oversight and remediation activities. It addresses these challenges by directly tying regulatory requirements to processes and controls (i.e., through the mapping of risks to products and processes), by cascading material risks down to the frontline in a systematic and truly risk-based way, and by defining objective (and whenever possible quantitative) Key Risk Indicators (KRIs) in the areas where the process "breaks" and creates exposure to a particular risk.

Thus, as exhibit 3 illustrates, there are typically numerous controls associated with every regulatory requirement throughout a given business process. Testing all of these controls consumes tremendous organizational time and resources. Each control is documented and its level of effectiveness qualitatively assessed (although the definition of “effectiveness” is often ambiguous and varies from person to person). Unfortunately, the overall control effectiveness score resulting from this exercise is only loosely correlated with the outcome – it’s not unusual to see critical audit findings in areas where the majority of controls have been deemed effective.

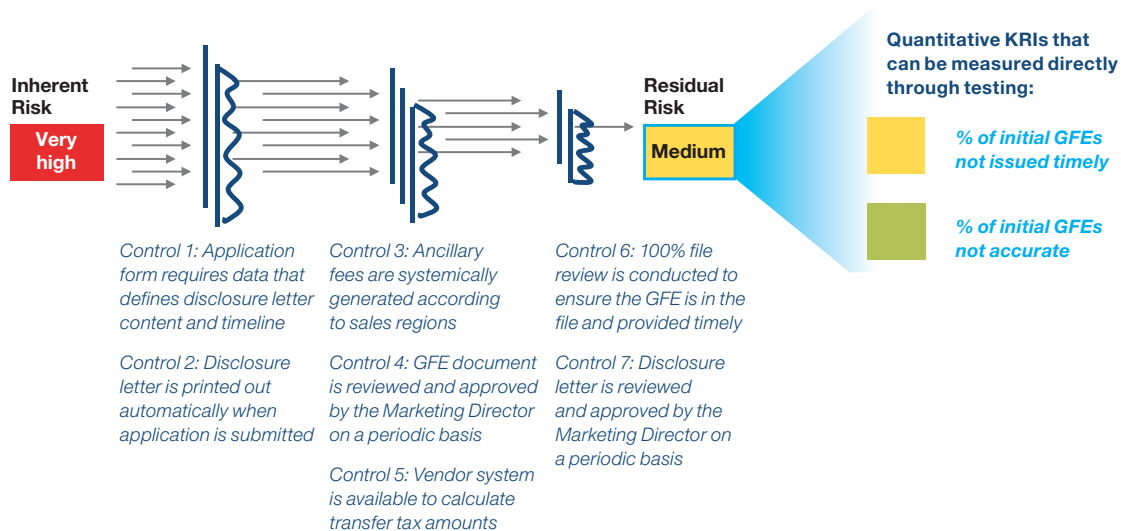
In contrast, the new approach starts by defining which risks apply to a given business process and identifying where exactly in the process they occur (known as “breakpoint analysis”). Informed by the identified process breakpoints, one can then design KRIs that directly measure the residual risk exposure. This approach leads to far fewer items to test (in our example 2 KRIs vs. 7 controls) and much more robust insights into what the key issues are. Moreover, it provides the essential fact base to guide and accelerate the remediation process and resource allocation.

### EXHIBIT 3

#### Focus on residual risks vs. individual controls leads to greater efficiency and effectiveness of the risk identification and assessment processes

##### Regulatory risk: Good Faith Estimate (GFE) Disclosures in Mortgage<sup>1</sup>

##### Business process: Delivery of disclosure letters to customers at the time of application



- Traditional compliance approach calls for ongoing testing of each of the above 7 controls embedded in the business process
- Monitoring key risk indicators for residual risk vs. testing numerous individual controls results in a much more efficient (fewer items to focus on) and effective (due to objective measurement) risk identification and assessment processes

<sup>1</sup> RESPA (§1024.7)  
SOURCE: McKinsey

# 3. Integration with the overall Risk Management governance, regulatory affairs and issue management process

Compliance risks are driven by the same underlying factors that drive other banking risks, but their stakes are higher in the case of adverse outcomes (e.g., regulatory actions that can result in restriction of business activities and large fines). Therefore it's only fitting that a modern compliance framework needs to be fully integrated with the bank's operational risk view of the world.

Integrating the management of these risks offers tangible benefits. First, it ensures the enterprise has a truly comprehensive view of its portfolio of risks and visibility into any systemic issues (e.g., cross-product, cross-process), and that no material risk is left unattended. Second, it lessens the burden on the business (e.g., no duplicative risk assessments and remediation activities) as well as on the control functions (e.g., no separate or duplicative reporting, training, and communication activities). Third, it facilitates a risk-based allocation of enterprise resources and management actions on risk remediation and investment in cross-cutting controls.

The following practical actions can help the bank firmly integrate Compliance into the overall Risk Management governance, regulatory affairs, and issue management process:

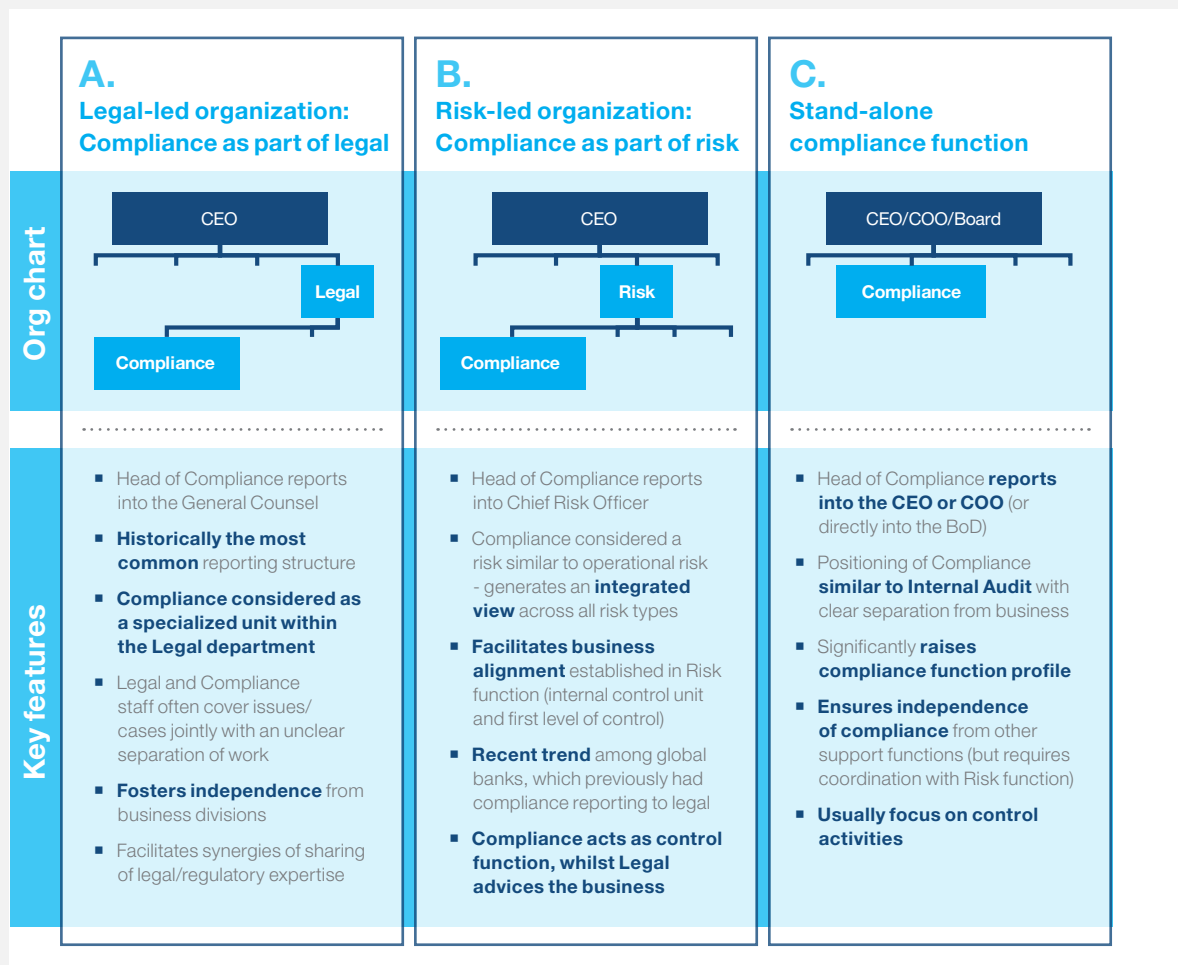
- Develop a single integrated inventory of operational and compliance risks
- Develop and centrally maintain standardized risk, process, product, and control taxonomies
- Coordinate risk assessment, remediation, and reporting methodologies and calendars (e.g., ensure one set of assessments in cross-cutting topical areas like Third-Party Risk Management; ensure consistency of Compliance monitoring and testing activities with QA/QC activities in Operational Risk)
- Define clear roles and responsibilities between risk and control functions at the individual risk level to ensure there are no gaps or overlaps, particularly in "grey areas" where disciplines converge (e.g., Third-Party Risk Management; Privacy Risk; AML and Fraud)
- Develop and jointly manage integrated training and communication programs
- Establish clear governance processes (e.g., escalation) and structures (e.g., risk committees) with mandates that span across risk and support functions (e.g., Technology), and that ensure sufficient accountability, ownership, and involvement from all stakeholders, even if issues cut across multiple functions
- Consistently involve and timely align senior Compliance stakeholders in determining action plans, target end dates, prioritization of issues and MRAs
- Establish a formal link and coordination processes with government affairs



To address this integration effectively, financial institutions are also considering changes to the organizational structure and placement of the Compliance function. Exhibit 4 lays out the three archetypes of Compliance organizations in banks. Migration of Compliance to Risk organization (i.e., archetype B) is a recent trend among global banks, which previously had Compliance reporting to Legal (i.e., archetype A). This new structure reinforces the view of Compliance as a risk similar to operational risk and as a control rather than advisory function, and is meant to facilitate an integrated view across all risk types. A few banking institutions have elevated Compliance to a standalone function (i.e., archetype C) positioning it similar to Internal Audit, with clear separation from business, thus significantly raising its profile but also creating the need for stronger coordination with the operational risk function.

## EXHIBIT 4

### Most common Compliance organization archetypes



SOURCE: McKinsey

# Measuring progress – outcomes that matter

The three principles outlined above imply a multi-faceted transformation of the Compliance function. The scope and complexity of this transformation creates a real risk of “missing the forest for the trees.” We have found it helpful to apply the following 10-point scorecard to measure progress on this journey:

1. Demonstrated focus on the role of compliance and its stature within the organization
2. Integrated view of market risks with Operational risk
3. Clear tone from the top and strong risk culture, including evidence of senior management involvement and active board oversight
4. Risk ownership and independent challenge by Compliance (vs. “advice and counsel”)
5. Compliance operating model with shared horizontal coverage of key issues and a clear definition of roles vs. the first line of defense
6. Comprehensive inventory of all laws, rules, and regulations in place to drive a risk-based compliance risk assessment program
7. Use of quantitative metrics and specific qualitative risk markers to measure compliance risk
8. Compliance MIS providing an integrated view of risks and reflecting a common risk taxonomy
9. Evidence of the first line of defense taking action and owning compliance and control issues
10. Adequate talent and capabilities to tackle key risk areas (e.g., BSA/AML, fiduciary risk) and a working knowledge of core business processes (e.g., mortgage servicing).

Assuming one point for each of these requirements, a bank with a low score (e.g., 4 to 5 points) may require a significant transformation. Banks can maximize the impact of the transformation by rigorously measuring progress against desired outcomes. Audit should play an important role in this process, providing an independent view of program status and effectiveness with respect to commonly agreed transformation objectives.



Regulatory compliance has undoubtedly affected banks in a variety of challenging ways, increasing the cost of service and sometimes making the delivery of great customer experience more difficult. However, as the regulatory environment evolves, we see a major opportunity for the Compliance function to get ahead of the curve by implementing targeted changes to its operating model and processes, and thus delivering a better quality of oversight while at the same time increasing its efficiency. Banks that successfully make this shift will enjoy a distinctive source of competitive advantage in the foreseeable future, being able to deliver better service, reduce structural cost, and significantly de-risk their operations.

About the authors:

Piotr Kaminski is a director in McKinsey’s New York office and Kate Robu is an associate principal in McKinsey’s Chicago office.

# McKinsey Working Papers on Risk

- 1. The risk revolution**  
Kevin Buehler, Andrew Freeman, and Ron Hulme
- 2. Making risk management a value-added function in the boardroom**  
André Brodeur and Gunnar Pritsch
- 3. Incorporating risk and flexibility in manufacturing footprint decisions**  
Eric Lamarre, Martin Pergler, and Gregory Vainberg
- 4. Liquidity: Managing an undervalued resource in banking after the crisis of 2007–08**  
Alberto Alvarez, Claudio Fabiani, Andrew Freeman, Matthias Hauser, Thomas Poppensieker, and Anthony Santomero
- 5. Turning risk management into a true competitive advantage: Lessons from the recent crisis**  
Andrew Freeman, Gunnar Pritsch, and Uwe Stegemann
- 6. Probabilistic modeling as an exploratory decision-making tool**  
Andrew Freeman and Martin Pergler
- 7. Option games: Filling the hole in the valuation toolkit for strategic investment**  
Nelson Ferreira, Jayanti Kar, and Lenos Trigeorgis
- 8. Shaping strategy in a highly uncertain macroeconomic environment**  
Natalie Davis, Stephan Görner, and Ezra Greenberg
- 9. Upgrading your risk assessment for uncertain times**  
Eric Lamarre and Martin Pergler
- 10. Responding to the variable annuity crisis**  
Dinesh Chopra, Onur Erzan, Guillaume de Gantes, Leo Grepin, and Chad Slawner
- 11. Best practices for estimating credit economic capital**  
Tobias Baer, Venkata Krishna Kishore, and Akbar N. Sheriff
- 12. Bad banks: Finding the right exit from the financial crisis**  
Gabriel Brennan, Martin Fest, Matthias Heuser, Luca Martini, Thomas Poppensieker, Sebastian Schneider, Uwe Stegemann, and Eckart Windhagen
- 13. Developing a postcrisis funding strategy for banks**  
Arno Gerken, Matthias Heuser, and Thomas Kuhnt
- 14. The National Credit Bureau: A key enabler of financial infrastructure and lending in developing economies**  
Tobias Baer, Massimo Carassinu, Andrea Del Miglio, Claudio Fabiani, and Edoardo Ginevra
- 15. Capital ratios and financial distress: Lessons from the crisis**  
Kevin Buehler, Christopher Mazingo, and Hamid Samandari
- 16. Taking control of organizational risk culture**  
Eric Lamarre, Cindy Levy, and James Twining
- 17. After black swans and red ink: How institutional investors can rethink risk management**  
Leo Grepin, Jonathan Tétrault, and Greg Vainberg
- 18. A board perspective on enterprise risk management**  
André Brodeur, Kevin Buehler, Michael Patsalos-Fox, and Martin Pergler
- 19. Variable annuities in Europe after the crisis: Blockbuster or niche product?**  
Lukas Junker and Sirus Ramezani
- 20. Getting to grips with counterparty risk**  
Nils Beier, Holger Harreis, Thomas Poppensieker, Dirk Sojka, and Mario Thaten
- 21. Credit underwriting after the crisis**  
Daniel Becker, Holger Harreis, Stefano E. Manzonetto, Marco Piccitto, and Michal Skalsky
- 22. Top-down ERM: A pragmatic approach to manage risk from the C-suite**  
André Brodeur and Martin Pergler
- 23. Getting risk ownership right**  
Arno Gerken, Nils Hoffmann, Andreas Kremer, Uwe Stegemann, and Gabriele Vigo
- 24. The use of economic capital in performance management for banks: A perspective**  
Tobias Baer, Amit Mehta, and Hamid Samandari
- 25. Assessing and addressing the implications of new financial regulations for the US banking industry**  
Del Anderson, Kevin Buehler, Rob Ceske, Benjamin Ellis, Hamid Samandari, and Greg Wilson
- 26. Basel III and European banking: Its impact, how banks might respond, and the challenges of implementation**  
Philipp Härle, Erik Lüders, Theo Papanides, Sonja Pfetsch, Thomas Poppensieker, and Uwe Stegemann
- 27. Mastering ICAAP: Achieving excellence in the new world of scarce capital**  
Sonja Pfetsch, Thomas Poppensieker, Sebastian Schneider, and Diana Serova
- 28. Strengthening risk management in the US public sector**  
Stephan Braig, Biniam Gebre, and Andrew Sellgren
- 29. Day of reckoning? New regulation and its impact on capital markets businesses**  
Markus Böhme, Daniele Chiarella, Philipp Härle, Max Neukirchen, Thomas Poppensieker, and Anke Raufuss
- 30. New credit-risk models for the unbanked**  
Tobias Baer, Tony Goland, and Robert Schiff
- 31. Good riddance: Excellence in managing wind-down portfolios**  
Sameer Aggarwal, Keiichi Aritomo, Gabriel Brenna, Joyce Clark, Frank Guse, and Philipp Härle

32. **Managing market risk: Today and tomorrow**  
Amit Mehta, Max Neukirchen, Sonja Pfetsch, and Thomas Poppensieker
33. **Compliance and Control 2.0: Unlocking potential through compliance and quality-control activities**  
Stephane Alberth, Bernhard Babel, Daniel Becker, Georg Kaltenbrunner, Thomas Poppensieker, Sebastian Schneider, and Uwe Stegemann
34. **Driving value from postcrisis operational risk management : A new model for financial institutions**  
Benjamin Ellis, Ida Kristensen, Alexis Krivkovich, and Himanshu P. Singh
35. **So many stress tests, so little insight: How to connect the 'engine room' to the boardroom**  
Miklos Dietz, Cindy Levy, Ernestos Panayiotou, Theodore Papanides, Aleksander Petrov, Konrad Richter, and Uwe Stegemann
36. **Day of reckoning for European retail banking**  
Dina Chumakova, Miklos Dietz, Tamas Giorgadse, Daniela Gius, Philipp Härle, and Erik Lüders
37. **First-mover matters: Building credit monitoring for competitive advantage**  
Bernhard Babel, Georg Kaltenbrunner, Silja Kinnebrock, Luca Pancaldi, Konrad Richter, and Sebastian Schneider
38. **Capital management: Banking's new imperative**  
Bernhard Babel, Daniela Gius, Alexander Gräwert, Erik Lüders, Alfonso Natale, Björn Nilsson, and Sebastian Schneider
39. **Commodity trading at a strategic crossroad**  
Jan Ascher, Paul Laszlo, and Guillaume Quiviger
40. **Enterprise risk management: What's different in the corporate world and why**  
Martin Pergler
41. **Between deluge and drought: The divided future of European bank-funding markets**  
Arno Gerken, Frank Guse, Matthias Heuser, Davide Monguzzi, Olivier Plantefevre, and Thomas Poppensieker
42. **Risk-based resource allocation: Focusing regulatory and enforcement efforts where they are needed the most**  
Diana Farrell, Biniam Gebre, Claudia Hudspeth, and Andrew Sellgren
43. **Getting to ERM: A road map for banks and other financial institutions**  
Rob McNish, Andreas Schlosser, Francesco Selandari, Uwe Stegemann, and Joyce Vorholt
44. **Concrete steps for CFOs to improve strategic risk management**  
Wilson Liu and Martin Pergler
45. **Between deluge and drought: Liquidity and funding for Asian banks**  
Alberto Alvarez, Nidhi Bhardwaj, Frank Guse, Andreas Kremer, Alok Kshirsagar, Erik Lüders, Uwe Stegemann, and Naveen Tahilyani
46. **Managing third-party risk in a changing regulatory environment**  
Dmitry Krivin, Hamid Samandari, John Walsh, and Emily Yueh
47. **Next-generation energy trading: An opportunity to optimize**  
Sven Heiligtag, Thomas Poppensieker, and Jens Wimschulte
48. **Between deluge and drought: The future of US bank liquidity and funding**  
Kevin Buehler, Peter Noteboom, and Dan Williams
49. **The hypotenuse and corporate risk modeling**  
Martin Pergler
50. **Strategic choices for midstream gas companies: Embracing Gas Portfolio @ Risk**  
Cosimo Corsini, Sven Heiligtag, and Dieuwert Inia
51. **Strategic commodity and cash-flow-at-risk modeling for corporates**  
Martin Pergler and Anders Rasmussen
52. **A risk-management approach to a successful infrastructure project: Initiation, financing, and execution**  
Frank Beckers, Nicola Chiara, Adam Flesch, Jiri Maly, Eber Silva, and Uwe Stegemann
53. **Enterprise-risk-management practices: Where's the evidence? A survey across two European industries**  
Sven Heiligtag, Andreas Schlosser, and Uwe Stegemann
54. **Europe's wholesale gas market: Innovate to survive**  
Cosimo Corsini, Sven Heiligtag, Marco Moretti, and Johann Raunig
55. **Introducing a holistic approach to stress testing**  
Christopher Mazingo, Theodore Papanides, Aleksander Petrov, and Gerhard Schröck
56. **Risk in emerging markets: The way forward for leading banks**  
Omar Costa, Jawad Khan, Cindy Levy, Alfonso Natale, and Ozgur Tanrikulu
57. **Managing supplier risk in the transportation and infrastructure industry**  
Arno Gerken, Tilman Melzer, and Marco Wampula

58. **A time for stress: The challenges facing Europe's banks**  
Silvio Angius and Giorgio Bonomo
59. **Managing supplier risk in the transportation and infrastructure industry**  
Arno Gerken, Tilman Melzer, and Marco Wampula
60. **Voices on bank transformation: Insights on creating lasting change**  
Walter Lironi and Frédéric Vandenberghe
61. **Managing the people side of Risk**  
Cindy Levy, Alexis Krivkovich, Mehdi El Ouali, Julia Graf
62. **People and talent management in risk and control functions**  
Julia Brüggemann, Arno Gerken, Julia Graf, Florian Pollner and Joyce Vorholt
63. **A marathon, not a sprint: Capturing value from BCBS 239 and beyond**  
Holger Harreis, Matthias Lange, Jorge Machado, Kayvaun Rowshankish, and David Schraa
64. **Improving disaster recovery**  
Benjamin Cheatham, Anne Healy, and Becca O'Brien Kuusinen
65. **An executive's guide to machine learning**  
Dorian Pyle and Cristina San Jose
66. **Repelling the cyberattackers**  
Tucker Bailey, James M. Kaplan, and Chris Rezek
67. **Developing robust PPNR estimates**  
Abhishek Anand and Jeff Schonert
68. **Taking the stress out of operational risk stress testing**  
Saptarshi Ganguly and Daniel Mikkelsen
69. **McKinsey Capital Management Survey 2015**  
Bernhard Babel, Daniela Gius, Roland Schneider, and Sebastian Schneider
70. **The age of utility: Are you a force that shapes the power markets, or do the forces shake you?**  
Joyce Clark, Sven Heiligtag, Jan Reichwald, and Thomas Vahlenkamp

